



21 Mayfields, Bristol, BS31 1BW

£250,000

Nestled in the charming area of Mayfields, Keynsham, Bristol, this delightful two-bedroom first-floor apartment offers a perfect blend of comfort and convenience. Built in 1955, the property is immaculately presented throughout, ensuring a welcoming atmosphere for its new occupants.

The apartment features a well-appointed reception room that invites natural light, creating a warm and inviting space for relaxation or entertaining. The fitted kitchen is both practical and stylish, ideal for those who enjoy cooking. The modern bathroom complements the living space, providing a serene retreat.

One of the standout features of this property is the south-facing balcony, which is perfect for enjoying a morning coffee or an evening glass of wine while soaking up the sun. The apartment benefits from new carpets, gas-fired central heating, and uPVC double glazing, ensuring comfort and energy efficiency throughout the year.

Entrance via uPVC double glazed obscured glass door into

Hallway

Stairs rising to first floor landing.

First Floor Landing

Access to loft space, double radiator, storage cupboard housing combination boiler, doors to

Bedroom One

13'5" x 9'10" (4.11 x 3.02)



uPVC double glazed window to front aspect, double radiator.

Bedroom Two

10'2" x 9'0" (3.12 x 2.75)



uPVC double glazed window to front aspect, double radiator.

Bathroom

4'5" x 7'4" (1.35 x 2.24)



Obscured uPVC double glazed window to side aspect, close coupled w/c, pedestal wash hand basin with taps over, panelled bath with shower attachment, single radiator, fully tiled walls.

Sitting Room

11'0" x 14'8" (3.36 x 4.49)



Two uPVC double glazed windows to rear aspect, uPVC double glazed door opening onto balcony, double radiator, door to

Kitchen

8'3" x 8'6" (2.54 x 2.61)



uPVC double glazed windows to side and rear aspect, a range of wall and floor units with worksurface over, sink drainer unit with mixer taps over, integrated oven and electric hob with extractor over, space and plumbing for washing machine, space for freestanding fridge freezer.

South Facing Balcony



Ideal for small table and chairs.

Outside

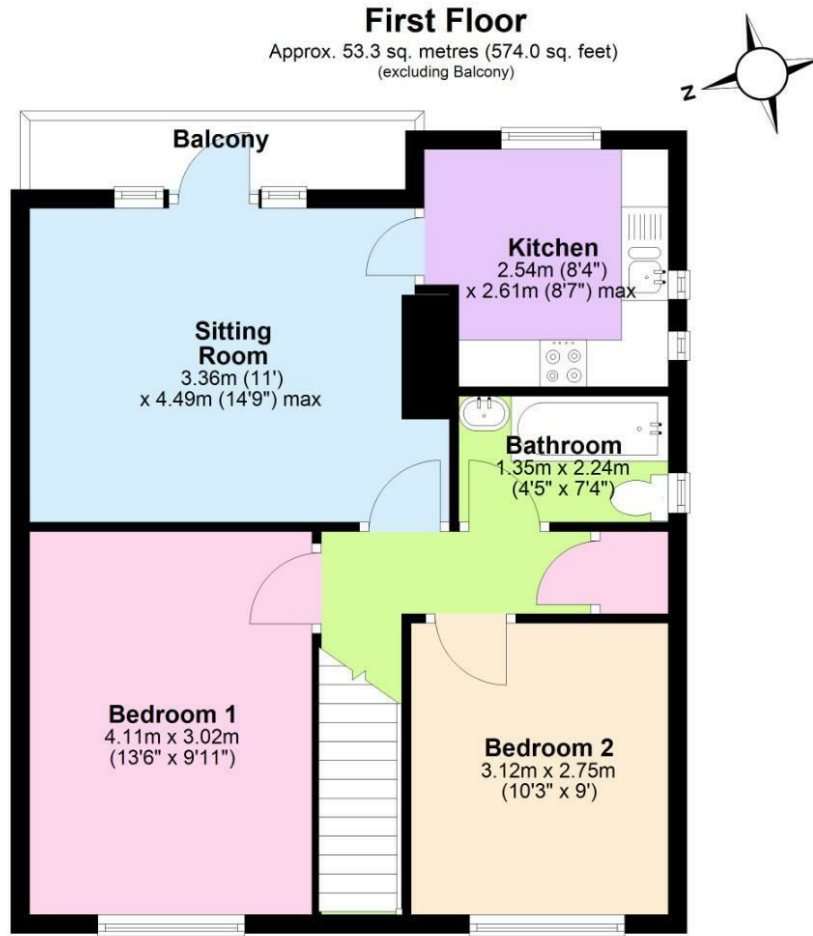


There is permit parking nearby, The property benefits from a front garden which is laid mainly to lawn with a pathway leading to the front door. A brick built storage shed is included in the sale

Directions

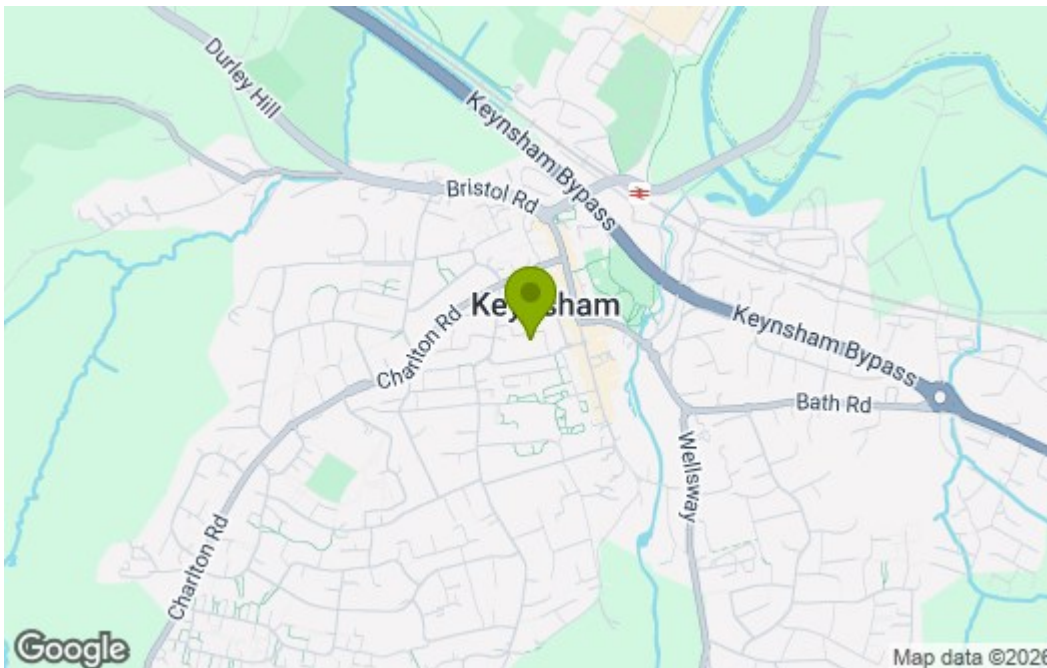
Sat Nav BS31 1BW

Floor Plan

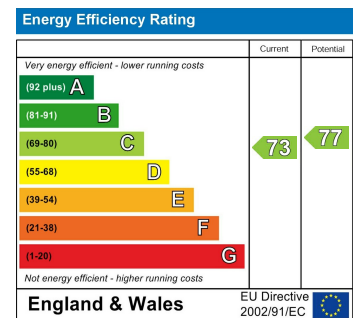


Total area: approx. 53.3 sq. metres (574.0 sq. feet)
21 Mayfield, Keynsham

Area Map



Energy Efficiency Graph



These particulars, whilst believed to be accurate are set out as a general outline only for guidance and do not constitute any part of an offer or contract. Intending purchasers should not rely on them as statements of representation of fact, but must satisfy themselves by inspection or otherwise as to their accuracy. No person in this firm's employment has the authority to make or give any representation or warranty in respect of the property.